



HPC & Research Computing Support at HKU

Dr. P.T. Ho

Deputy Director, Computer Centre, HKU

“Mini-PRAGMA” at HKU

17 July 2012



The University of Hong Kong

- ▶ Founded in 1912
- ▶ Ranked 18th in "THES-QS World University Rankings 2007"
- ▶ Ranked 1st in "QS.com Asian University Rankings 2010"
- ▶ 22,139 students (in 2009-2010)
 - 11,589 undergraduates, 10,550 postgraduates
- ▶ 10 faculties
 - Architecture, Arts, Business and Economics, Dentistry, Education, Engineering, Law, Medicine, Science, Social Sciences



Characteristics of HKU HPC & Research Computing Support

- ▶ One of the few that provides centralized HPC and service support for cutting-edge research collaborations
- ▶ Well known within institution as well as in the region
- ▶ Active exchanges with a number of Chinese and International research consortiums
- ▶ Enabled successful work of more than 130 PhDs since 1995
- ▶ Hosted the 20th PRAGMA Conference at March 2011



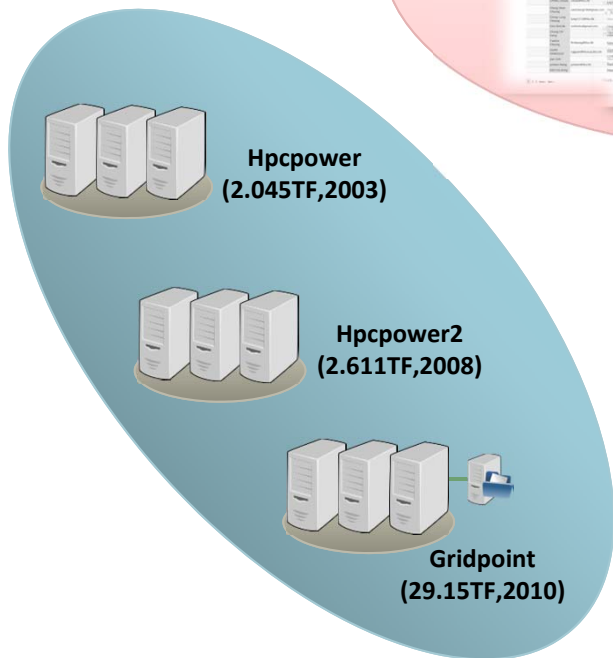
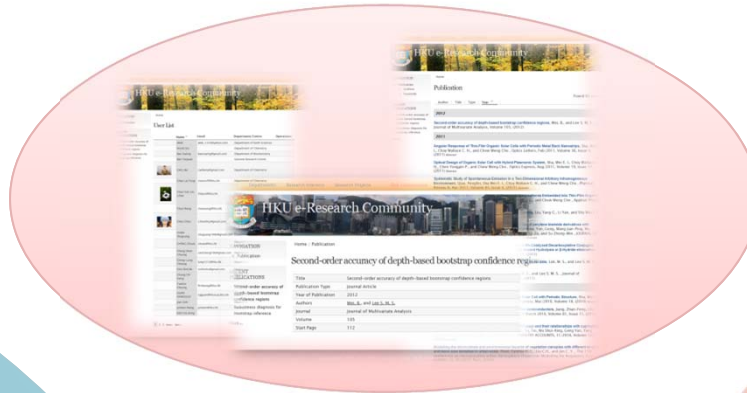
Memory Refresh – PRAGMA 20 cum HKU Centenary IT Conference



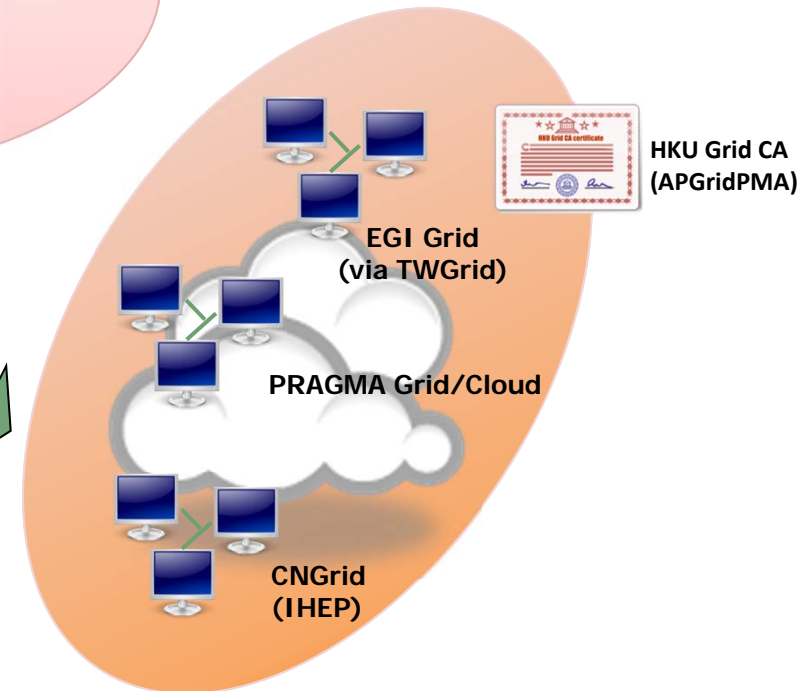
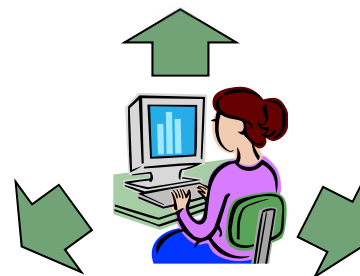


Existing HPC Services

HKU eResearch Community



High Performance Cluster Computing

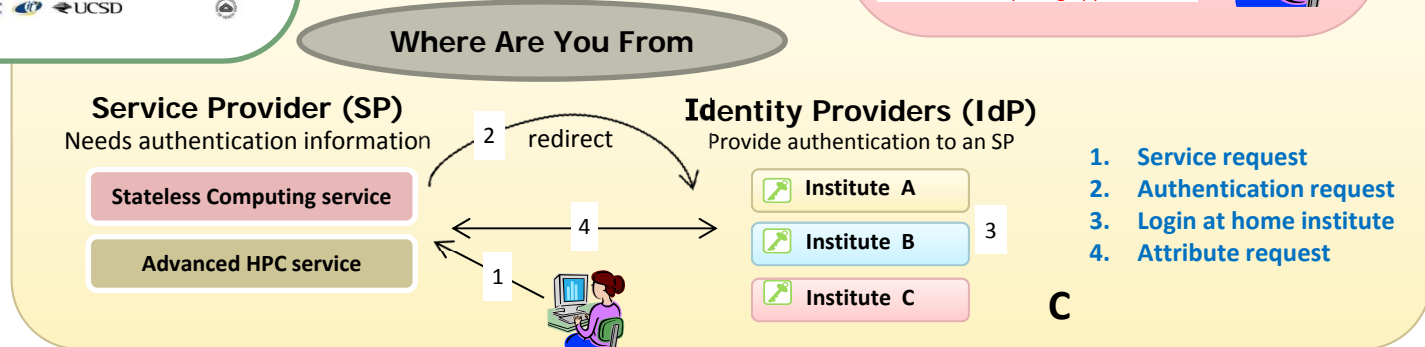
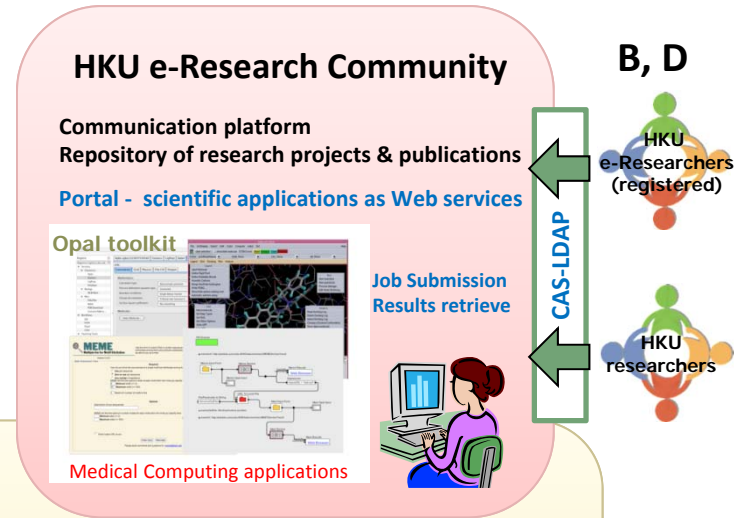
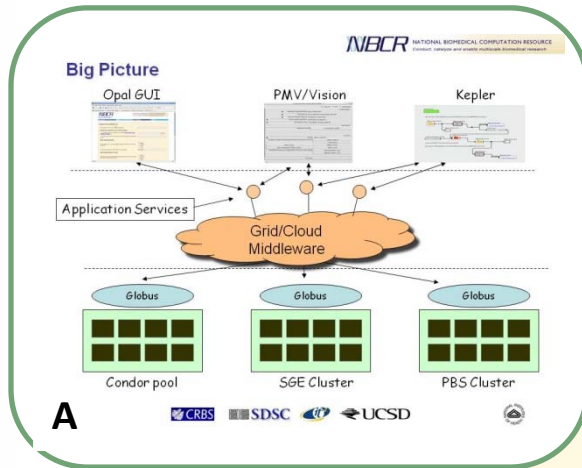


Grid Computing



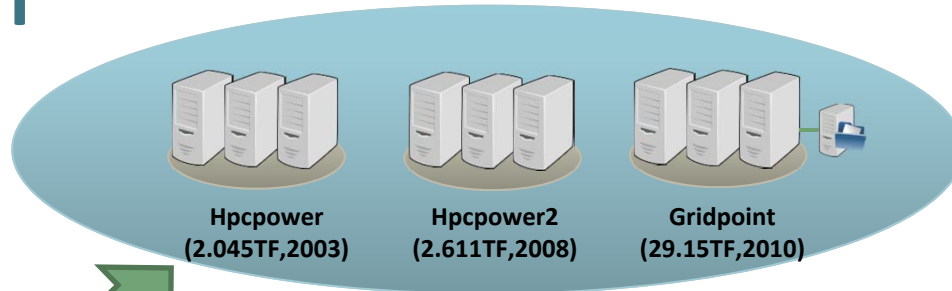
Our goal in coming years to be achieved

- A. Web-based Stateless Scientific Computing Services
- B. HKU e-Research Community
- c. Federated Identity Management System for Scientific Collaboration
- D. Medical Computing



Our mission

HPC Cluster Systems



Federated Identity Management System for Scientific Collaboration

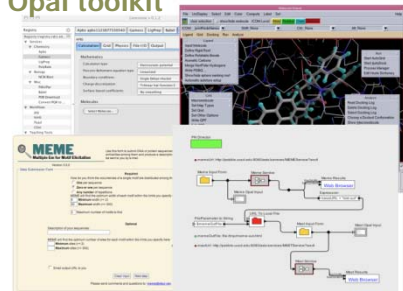
(Shibboleth, SAML, etc.)

HKU e-Research Community

Communication platform
Repository of research projects & publications

Portal - scientific applications as Web services

Opal toolkit



Medical Computing applications

Job Submission
Results retrieve



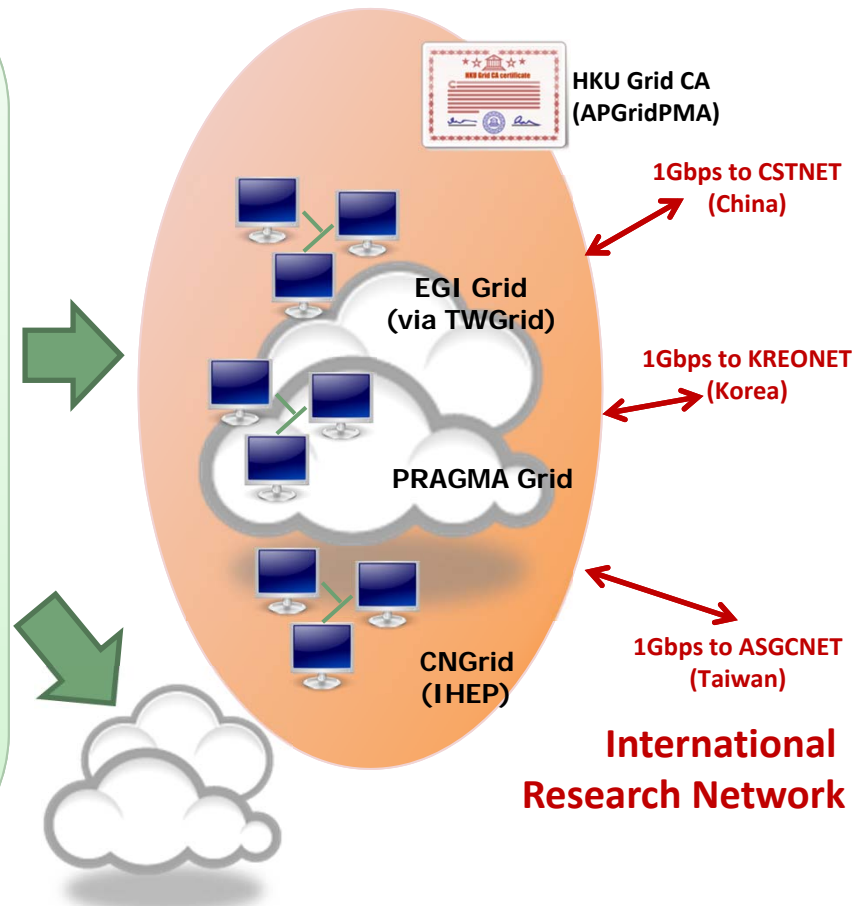
CAS-LDAP

Local institutes

HKU
e-Researchers
(registered)

HKU
researchers

Grid Computing





Thank You